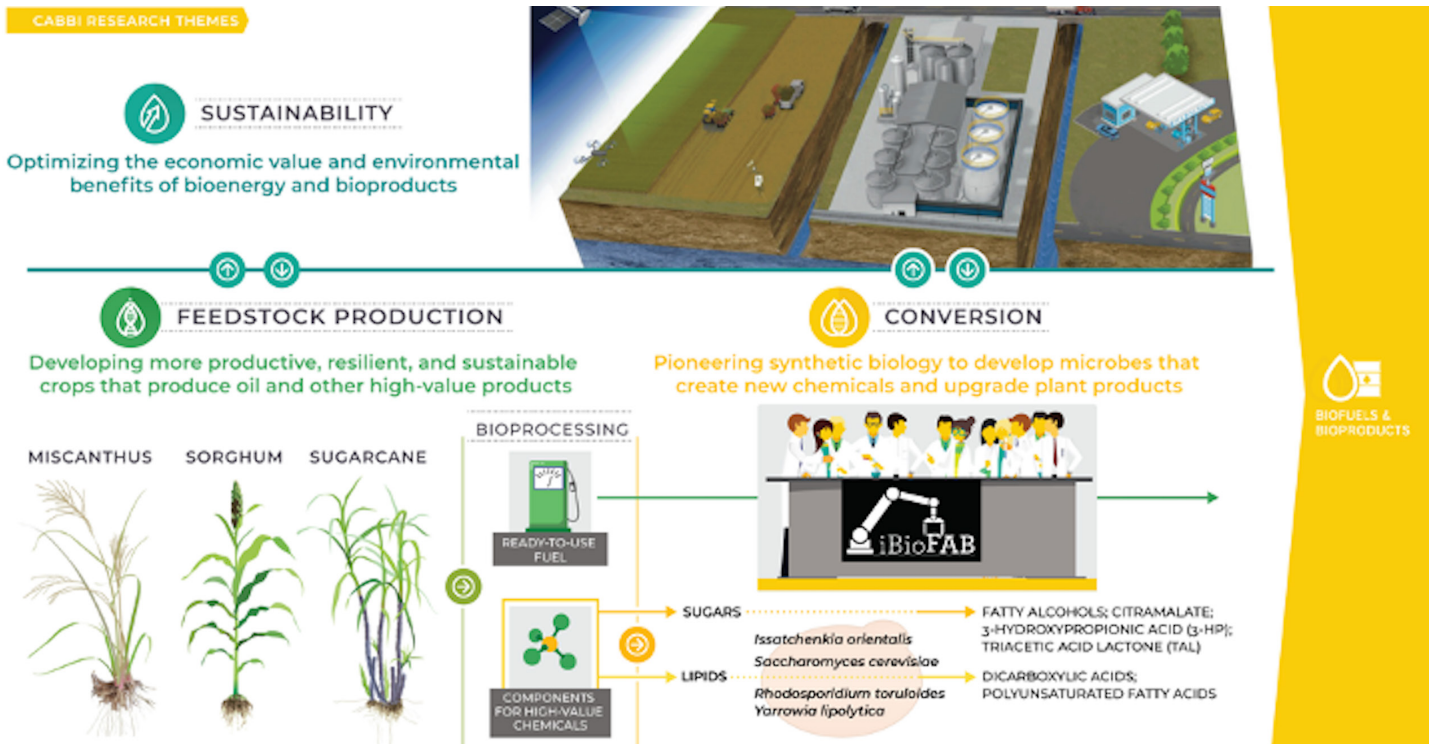


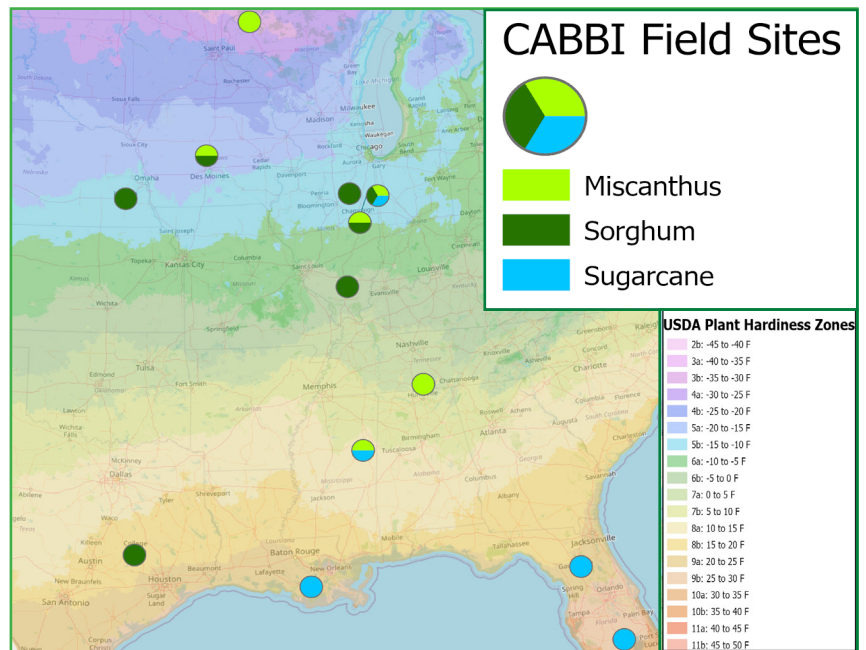
**Purpose** — Provide the scientific discoveries and new technologies to develop an economically viable and ecologically sustainable domestic biofuel and bioproducts industry from dedicated bioenergy crops

**Benefits to Society** — Rural economic development; more diverse, sustainable, and resilient agriculture; domestic energy production; counteracting climate change



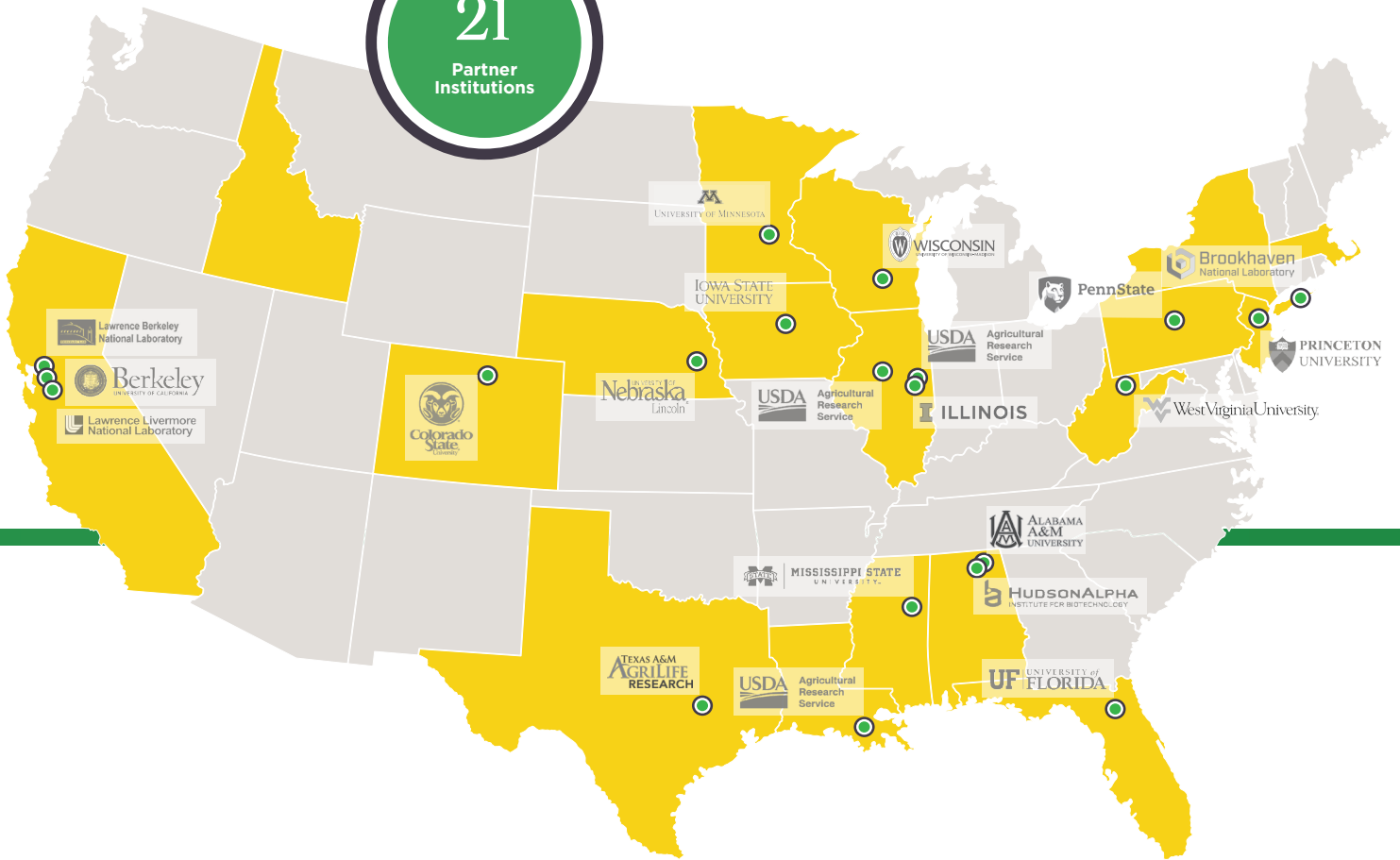
## CABBI CROPLANDS

CABBI's target crops — miscanthus, sorghum, and sugarcane — can bring positive impacts across the diverse environmental conditions of the Eastern United States, without irrigation and on poorer soils



**CABBI BY THE NUMBERS**

**21**  
Partner  
Institutions



**265**  
Peer-Reviewed  
Publications  
in Five Years

**52**  
Intellectual  
Property Filings  
in Five Years

**57**  
Faculty-Level  
Researchers  
Nationwide

**184**  
Postdoctoral  
Researchers  
& Technicians

**143**  
Graduate  
& Undergrad  
Students

**CABBI OUTREACH & EDUCATION**

**FOR K-12 STUDENTS**

**FOR UNDERGRADS**  
**RISE** — CABBI summer research program; nationwide recruiting effort to increase opportunities for students from groups underrepresented in STEM



**World of Genomics** — CABBI researchers offer hands-on activities; interactive demonstrations during three-day event at St. Louis Science Center, National Academy of Sciences, other prominent venues

**Pollen Power** — Weeklong summer camp for 20-40 middle school girls (underrepresented groups actively recruited/sponsored) to learn imaging and communication technologies; small-group activities led by female graduate students

**iGEM** — International Genetically Engineered Machine (iGEM) Foundation competition at MIT involving undergrads working with CABBI researchers; team presents findings each year in Boston

**FOR PRODUCERS**

**Agromony Day** — University of Illinois Farms/Energy Farm annual event features CABBI booth in main tent, presenting research for farmers and wider community